



OFFSHORE TECHNOLOGY SOLUTIONS LTD.



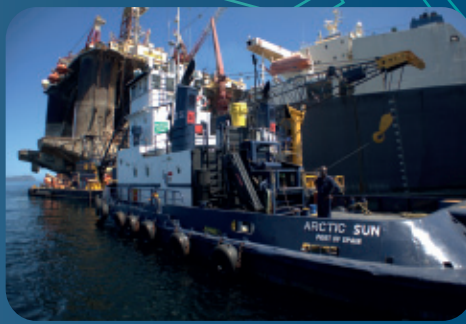
OFFSHORE TECHNOLOGY SOLUTIONS LTD.

ARCTIC SUN

UTILITY VESSEL

OTSL - 74ft. Tug and utility vessel is a well rounded support vessel capable of shallow draft operations, rugged horsepower. Dual 348 Caterpillar main engines, 4:1:1 reduction gears as well as its large four blade propellers enables a 9T bollard pull.

ARCTIC SUN - UTILITY TUG



Offshore Technology Solutions Ltd. - Tropical Marine Building, 106 Western Main Road, Chaguaramas, Trinidad, West Indies.
Telephone: 1 (868) 634-2213 - 2216 - FAX 1 (868) 634-4449 - Email: info@otsl.biz - Web: www.otsl.biz



OFFSHORE TECHNOLOGY SOLUTIONS LTD.

OFFSHORE TECHNOLOGY SOLUTIONS LTD.

ARCTIC SUN

VESSEL SPECIFICATIONS.

MAIN PARTICULARS

LENGTH OVERALL.....	74 FT.	22.5 M.
BEAM.....	25 FT.	7.6 M.
LIGHT DRAFT.....	5 FT.	1.5 M.
MAXIMUM DRAFT.....	7 FT.	2.1 M.

CAPACITIES

FRESH WATER.....	2,000 USG
FUEL OIL.....	11,000 USG
LUBE OIL.....	90 USG
SEWER TANK.....	YES
SEWER TREATMENT.....	YES

WORK DECK

MAXIMUM LOADING.....	20 ST.	18 MT.
CLEAR DECK LENGTH.....	16 FT.	4.8 M.
CLEAR DECK WIDTH.....	22 FT.	6.7 M

TONNAGE

GRT.....	61.7
NRT.....	61.7

MACHINERY

MAIN ENGINES	2X 348 CATERPILLAR
HORSEPOWER	1,450
REDUCTION GEARS	4.1.1
PROPELLERS	49.5" X 49" (FOUR BLADE)
BOLLARD PULL	9 TON
GENERATORS	2X 40 KW 110/220V 60HZ
FIRE PUMP	200 GPM @ 75 PSI
RESCUE BOAT	YES
TOW PINS	YES
BOW ANCHOR	YES
ANCHOR HANDLING	10 ST 9 MT

Ataculata Hydraulic Crane 4 TON.

ACCOMMODATIONS

BERTHS.....	7
GALLEY.....	YES
SEATING CAPACITY.....	8 PERSONS
SHOWER / HEAD.....	1
WASHER / DRYER.....	YES

ELECTRONICS & CONTROLS

DEPTH SOUNDER.....	1
RADAR.....	1
GPS / PLOTTER.....	1
AUTO PILOT.....	YES
EPIRB.....	YES
INTERNET / E-MAIL.....	LOCAL
VHF.....	2
SSB.....	1
CALL SIGN.....	9YFL
STERN CONTROL.....	YES

DOCUMENTATION

CLASS.....	NO
LOAD LINE.....	YES
MINIMUM CREW.....	6
SAFETY COMPLIANCE.....	CCSS
IMO #	TT30006
FLAG.....	TRINIDAD & TOBAGO
BUILDER.....	BC MARINE SHIP LTD.
YEAR REBUILT.....	2011

PERFORMANCE

MAXIMUM SPEED... 10 KNOTS @ 50 GPH
CRUISING SPEED..... 8 KNOTS @ 30 GPH
ECONOMICAL SPEED ..6 KNOTS @ 22 GPH
MAX. ENDURANCE ... 15 DAYS.
MAX. RANGE 2000 N/M

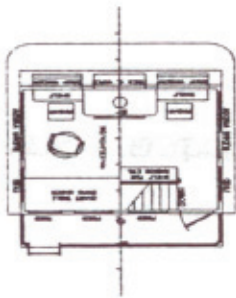


OFFSHORE TECHNOLOGY SOLUTIONS LTD.

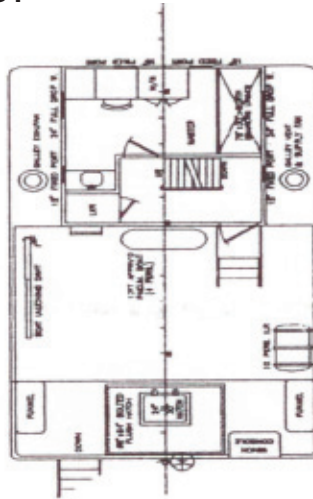
OFFSHORE TECHNOLOGY SOLUTIONS LTD.

ARCTIC SUN

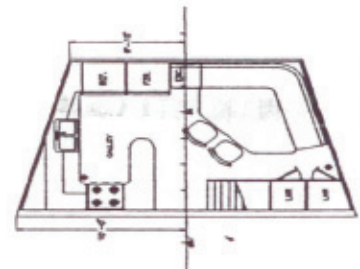
VESSEL DRAWING & LAYOUT



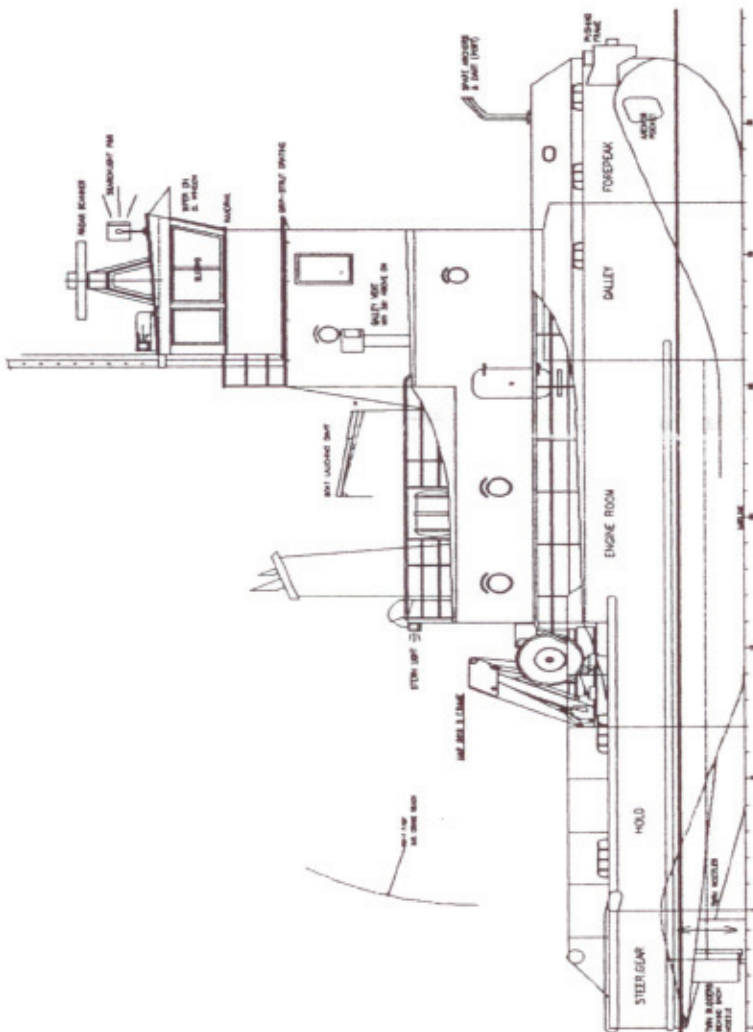
WHEELHOUSE



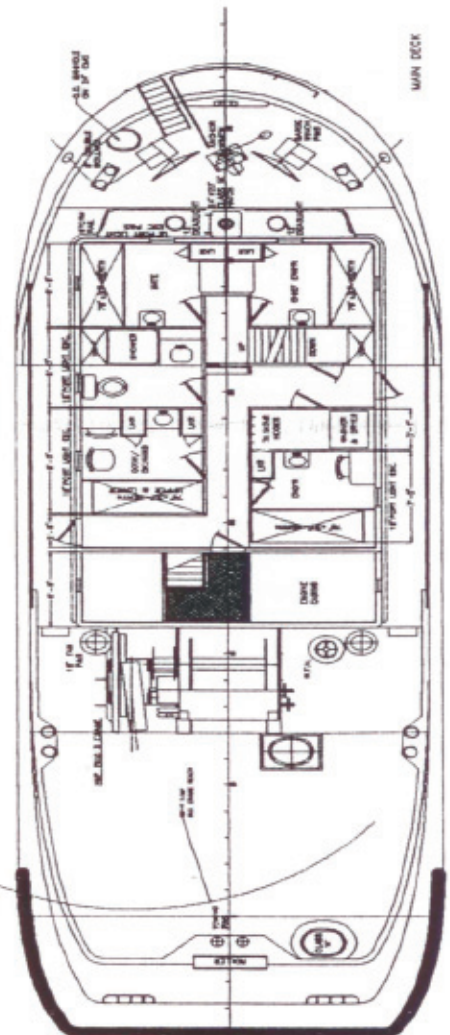
UPPER DECK



GALLEY/MESS



PROFILE



MAIN DECK